

2013 Public Outcomes Report

UNITED BREAST CENTER: BREAST IMAGING MEASURES

COC PERFORMANCE MEASURES

The American College of Surgeons Commission on Cancer (CoC) Standard 1.12 requires an annual report of patient or program outcomes be developed and disseminated by the United Hospital Cancer Committee. This standard is required only if the committee is pursuing a commendation award for this category.

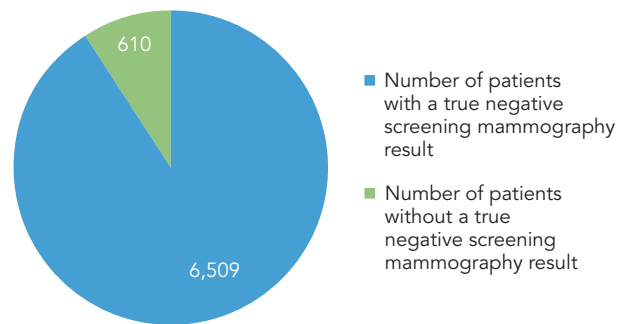
Performance and outcomes for breast imaging data are evaluated annually by United Hospital’s Cancer Committee and Breast Center leadership team. The data for this report is generated by the United Breast Center for 2012.

BREAST IMAGING MEASURE 1

True negative results correlate with no known diagnosis of cancer within one year of a negative screening mammography examination.

- 6,509 of 7,119 (91 percent) patients received a true negative breast imaging result.

TRUE NEGATIVE BREAST IMAGING RESULTS (TN)

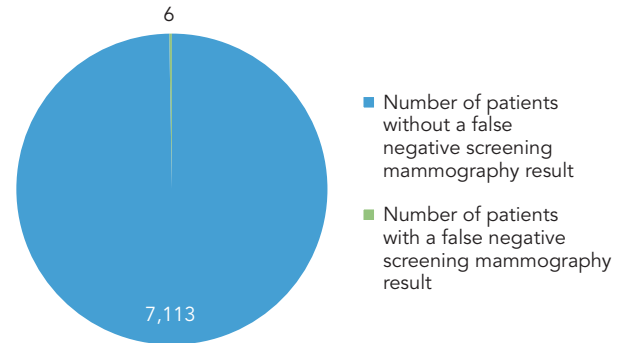


BREAST IMAGING MEASURE 2

False negative results correlate with a diagnosis of cancer within one year of a negative screening mammography examination.

- 6 of 7,119 (0.1 percent) patients received a false negative breast imaging result.

FALSE NEGATIVE BREAST IMAGING RESULTS (FN)

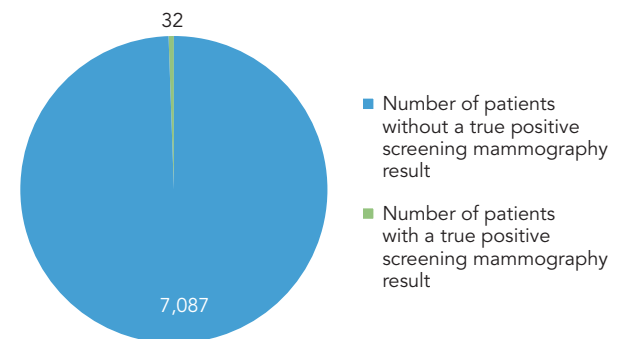


BREAST IMAGING MEASURE 3

True positive results correlate with a diagnosis of cancer within one year after a positive screening mammography examination.

- 32 of 7,119 (.45 percent) patients received a true positive breast imaging result.

TRUE POSITIVE BREAST IMAGING RESULTS (TP)

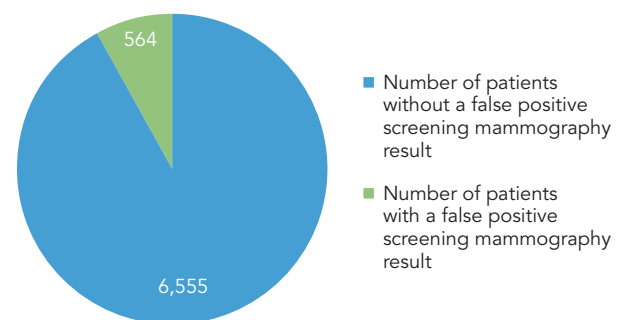


BREAST IMAGING MEASURE 4

False positive results correlate with no known diagnosis of cancer within one year of a positive screening mammography examination.

- 564 of 7,119 (8 percent) patients received a false positive breast imaging result.

FALSE POSITIVE BREAST IMAGING RESULTS (FP)



BREAST IMAGING MEASURE 5

Positive Predictive Value (PPV2)

Positive predictive values correlate with the percentage of patients with a positive screening mammography examination and a recommendation for biopsy that resulted in a diagnosis of cancer within one year.

- United Breast Center PPV₂ rates are 36 percent
- National benchmark data range for PPV2 rates are 20-40 percent

BREAST IMAGING MEASURE 6

Cancer detection rates are the number of cancers correctly detected during a breast screening mammography examination per 1,000 patients examined.

- United Breast Center cancer detection rates for screening mammography examinations are five per 1,000 patients
- National benchmark data for cancer detection rates for screening mammography are > 2.5 per 1,000 patients

BREAST IMAGING MEASURE 7

Recall rates are the number of patients with an abnormal screening mammogram resulting in the need for additional imaging.

- United Breast Center recall rates for screening mammography are 8 percent
- National benchmark data range for screening mammography recall rates are 5-12 percent

BREAST IMAGING MEASURE 8

Fine needle aspirations and/or needle core biopsies are performed prior to surgical treatment of breast cancer.

- United Breast Center fine needle aspirations and needle core biopsy rates are 91 percent