

Directions and parking

Abbott Northwestern Hospital
Education Building, Auditorium A/B
800 East 28th St., Minneapolis, MN 55407

Participants are encouraged to park in the Mother Baby Center Visitor parking ramp located off of 26th Street, near the 910 Medical Building. Entrance to the parking garage is from 26th Street Visitor Ramp (Blue parking garage) off the roundabout to the main entrance of The Mother Baby Center. The Education Building is located directly across the street from the parking ramp.

Parking fees are on your own.



Planning committee

Liz Kozub, MS, RN, CCNS, CNRN, CNRN –
ANW Clinical Nurse Specialist, Neurosciences

Leena Martel, BSN, RN – ANW Neuroscience
Patient Care Supervisor

Lucy Furlong, DNP, RN, NE-BC – ANW
Neuroscience Patient Care Manager

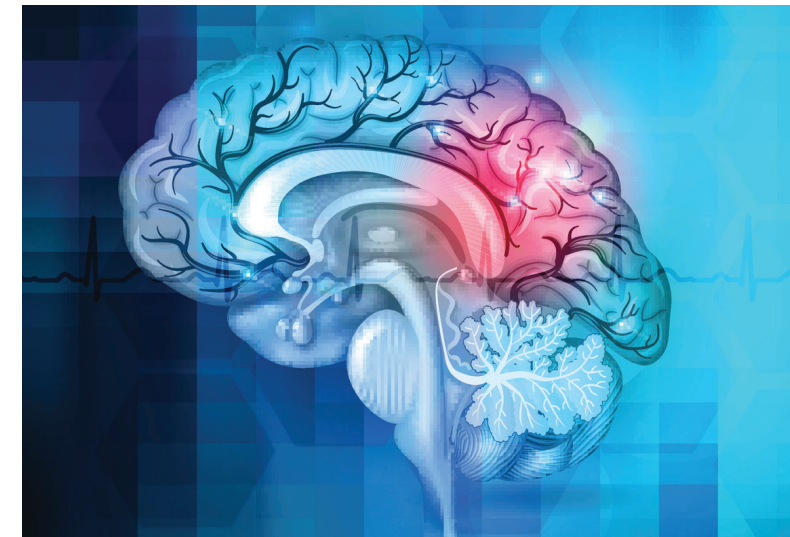
SPONSORED BY:

ABBOTT NORTHWESTERN
NEUROSCIENCE DEPARTMENT

Stroke Certified Registered
Nurse (SCRN) Review Course

Oct. 24 & 25, 2019

Abbott Northwestern Hospital
Education Bldg, Auditorium A/B
800 East 28th St.
Minneapolis, MN 55407




AllinaHealth
ABBOTT
NORTHWESTERN
HOSPITAL

Abbott Northwestern
Neuroscience Department

allinahealth.org/abbottnorthwestern

406781 0219 ©2019 ALLINA HEALTH SYSTEM. TM – A TRADEMARK OF ALLINA HEALTH SYSTEM.

AllinaHealth 

ABBOTT
NORTHWESTERN
HOSPITAL

Agenda

Sign-in each day begins at 7 a.m.

Day 1: October 24, 2019

7:30 – 9:30 **Anatomy and Physiology**

Vascular anatomy, brain structures, correlation of deficits, neuroplasticity

9:30 – 9:45 **Break**

9:45 – 11 **Preventive Care**

Risk factors, health education, patient education, lifestyle changes

11:00 – noon **Lunch on your own**

noon – 2:00 **Hyperacute Care**

Initial triage, neurological assessment, stroke scores, thrombolytics, emergency management

2 – 2:15 **Break**

2:15 – 3:30 **Diagnostics**

Understanding diagnostic tests, risks and benefits, pre- and post-care

3:30 – 4 **SCRN Test Review**

Day 2: October 25, 2019

7:30 – 9:30 **Acute Care**

Neurological assessment, diagnostic tests, monitoring, safety measures, treatment options, associated stroke disorders

9:30 – 9:45 **Break**

9:45 – 11 **Acute Care continued**

Holistic care, palliative care, organ donation, specific stroke care, post-interventional procedures

11:00 – noon **Lunch on your own**

noon – 1:30 **Neurological Medications**

Indications, contraindications, side effects, dosage

1:30 – 1:45 **Break**

1:45 – 3 **Post-acute Care**

Rehabilitation care, discharge planning

3 – 3:30 **Systems and Quality Care**

Protocols/pathways, stroke units and stroke teams, stroke center certification

Program description and purpose

Program Purpose

This two-day program is designed to present a comprehensive review of care of the stroke patient. The content presented will assist the experienced neuroscience nurse in preparing for the stroke certified registered nurse exam (SCRN). This content should also benefit all healthcare professionals caring for neuroscience patients.

Target Audience

Nurses and all healthcare providers who wish to increase their knowledge in providing the most skilled care available for stroke patients.

Contact Hours

This activity has also been designed to meet the Minnesota Board of Nursing continuing education requirements for 14 hours of credit. However, the nurse is responsible for determining whether this activity meets the requirements for acceptable continuing education.

Objectives

1. Identify clinical signs of an ischemic stroke involving anterior, middle and posterior cerebral artery occlusion.
2. List and discuss the modifiable risk factors of a stroke
3. Discuss the role of the dispatcher and EMS providers in dispatching patient to the highest level of care possible within the shortest time possible.
4. Discuss the dose and calculation of the rtPA therapy and state the guidelines for monitoring during and after administration.
5. Discuss the purpose of a non-contrast CT scan in evaluating an acute ischemic and hemorrhagic stroke.

Faculty

Kendra M. Kent, MS, RN-BC CCRN, CNRN, TCRN

Kendra has an extensive and comprehensive knowledge base and is known for her ability to simplify complex material. She received her BSN from the University of Texas in Arlington in 1985 and her MSN as a Clinical Nurse Specialist from Texas Women's University in 1993.

Kendra has specialized in neuroscience and critical care nursing throughout her career. She has worked in the following prestigious hospitals: Parkland Memorial Hospital in Dallas, Texas; Harris Methodist Hospital in Ft. Worth; St. Mary's Hospital in West Palm Beach, Florida. She is currently the Director of Marcus Neuroscience Institute in Boca Raton, Florida. She is also the co-owner of Quest for Nursing Seminars.

Registration

All attendees must self-register in Eventbrite.

Search Stroke Certified:

<https://strokecertifiedrn2019.eventbrite.com>

Tuition

Allina Health employee: \$100

Non-Allina Health employee: \$200

Registration will close on Sunday, Oct. 6, 2019 at 11:59 p.m. After Oct. 6 at 11:59 p.m., add the additional fee to tuition above:

Additional late and day of registration fee: \$25

No refunds can be issued; no substitutions may be made.

Space is limited. Please register early.

For questions, please contact
Liz Kozub at 612-863-4019 or
Elizabeth.Kozub@allina.com.